



Point-of-Care Handheld Ultrasound

Four models that fit your needs and budget.





- Lightweight and portable, with embedded WiFi
- Easy to learn and use
- Image optimization showing gain, TGC, focus, harmonic, reject, depth, and dynamic range
- Measures length, area, circumference, angle, trace, and more
- Contains on-screen annotation with virtual keyboard
- Costs less than a traditional ultrasound probe, with no activation, subscription, or user fees
- For all patient sizes



Learn more
SonoMe-Vet.com
1-877-9-BIONET (1-877-924-6638)

bionet

MODELS AND SPECIFICATIONS

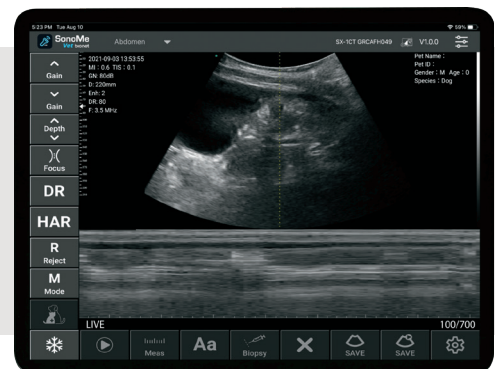
| Model | Image quality | Convex | Linear | Mode | Frequency | Element | Animal size* | Warranty |
|--|-----------------|--------|--------|--------------|-----------------------------|---------|--------------|----------|
|  5CB General usage | Standard | ✓ | | BW | 3.2~5Mhz | 128 | S/M/L | 1 year |
|  5C Extended usage | Standard | ✓ | | BW/ COLOR | 3.2~5Mhz | 128 | S/M/L | 1 year |
|  H5C Extended usage | High Resolution | ✓ | | BW/ COLOR | 3.2~5Mhz | 192 | S/M/L | 1 year |
|  H5C10L Extended usage | High Resolution | ✓ | ✓ | BW/ COLOR | C: 3.2~5Mhz L: 7.5~10Mhz | 192 | S/M/L | 1 year |

Linear probes available for special orders. Contact us for details.

*Animal size: Small (4.4 lbs to 20 lbs), Medium (21 lbs to 60 lbs), Large (61 lbs and higher)

VETERINARY-SPECIFIC MOBILE APP

- Easy-to-use on-screen operation
- Image optimization, measurement, annotation
- Store and review images on your device
- For iOS 8.0+



Bionet America Inc.
2691 Dow Ave., Suite B, Tustin, CA 92780
Phone: 1-877-9-BIONET (1-877-924-6638)
Email: Sales@BionetUS.com
Web: SonoMe-Vet.com

This product is designed for veterinary use only.

bionet

www.BionetUS.com